

CERTIFIED RECORD OF LAND CORNER MONUMENTATION

History of original corner establishment:
New corner

*

DIAGRAM
T10S R32E
CNSW1/64
+
S12

Description of corner evidence found:

Description of monument and accessories I establish to perpetuate the original location of this corner:

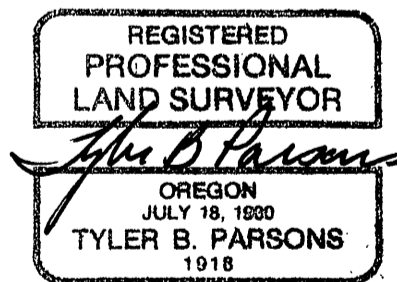
Set a 2x30" aluminum monument 24" in the ground in a mound of stone. Found a 5/8" rebar with an unmarked yellow plastic cap N47°27'W 6.73 ft, origin unknown.
An 8" P.Pine bears S5°04'W 42.6 ft, scribed CNSW1/64S12BT.
A 9" P.Pine bears N19°38'W 20.6 ft, scribed CNSW1/64S12BT.

T10S R32E
CNSW1/64
+
S12
PLS1918
1989

New BTs have 3/4" brass washers marked PLS1918 attached to the BT blaze, faces and bands painted with red tree marking paint, and BT tags and Land Survey Monument signs. A steel fence post with Land Survey Monument sign is driven approximately 3-5 feet from the corner.

Sun Cadastral Survey, 53-04H1-7-4011
Project No. 8722LC
Field Book: 8-22
Work Accomplished: 9/7/89
Witnesses: Louise Parsons

PARSONS SURVEYING
1915 S.E. Stone Street
Corvallis, OR 97333
(503) 752-7515



Office of County Surveyor County of GRANT
State of OREGON, I hereby certify that the within instrument was filed in this office
for record on the 21 day of Nov, 19 89

Robert D. Baggett by _____
(COUNTY OFFICIAL) (DEPUTY)